

AtRactor

Atraumatic Retraction System

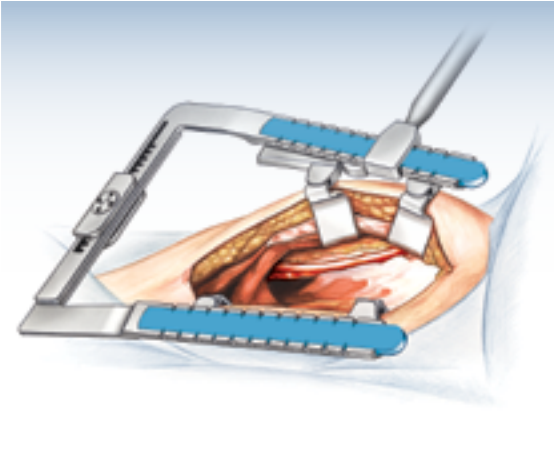


Aesculap Surgical Technologies — Surgical Instruments

AESCULAP®

AtRactor

Coronary Surgery



One Retractor for all Open Heart Operations

- **V-shaped retractor arms** provides **improved view** of the operating field
- **Suture Holder inserts** enable an organized and simple fixation of the sutures
- Compatible with other devices (e.g. OPCAB stabilizer)
- **Rotating blades** are flexible and conform to the changing dimensions of the ribs during the opening process of the retractor - **reduces trauma** to the patient through unique atraumatic design

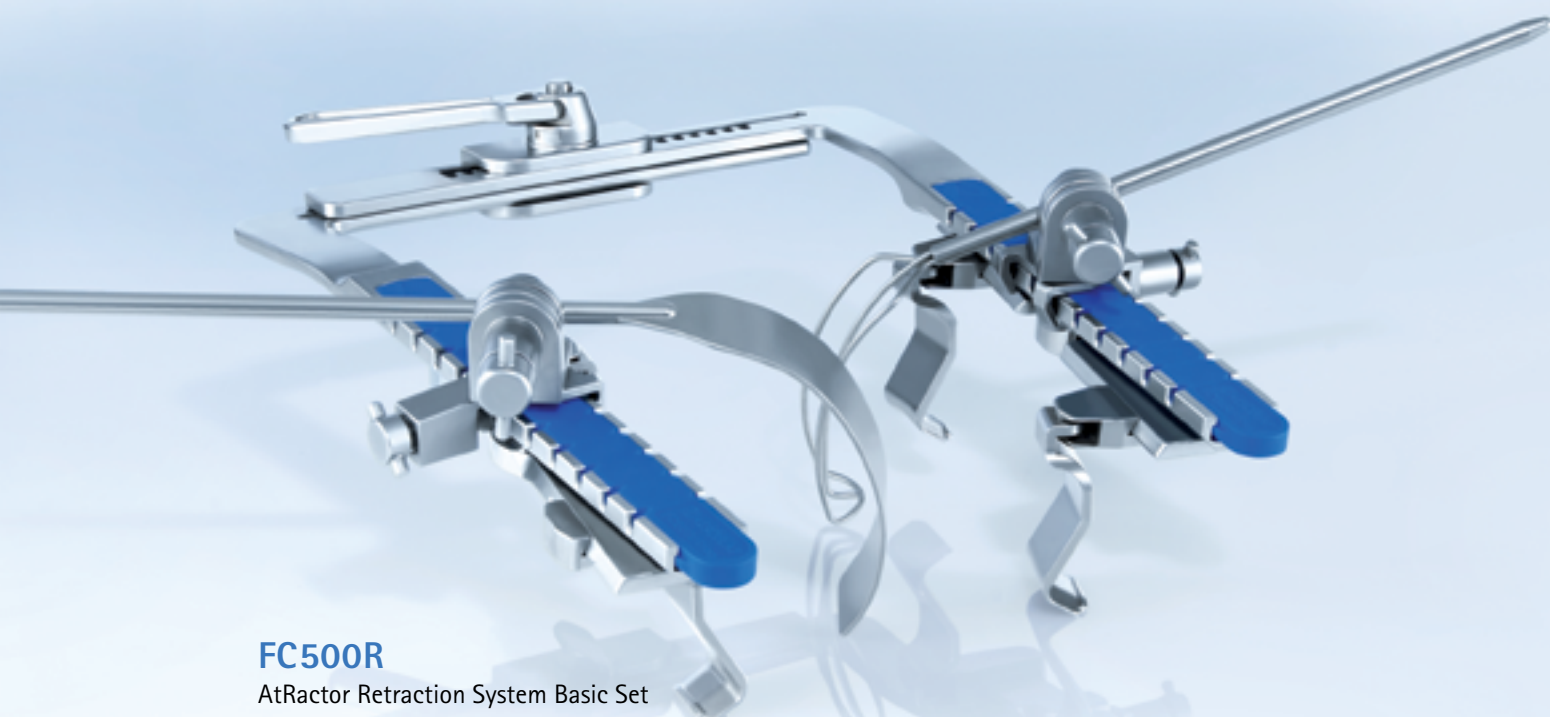
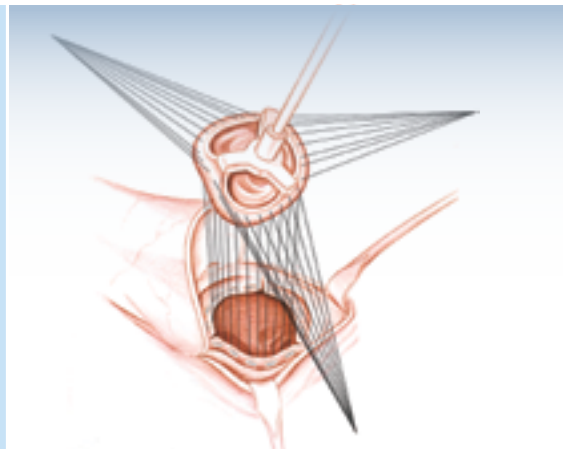
FC510R

AtRactor IMA Set Complete

- **Atraumatic IMA Preparation** – Transfer of force from patient's sternum to OR table reduces the possibility of rib fracture
- **Improved exposure** of the internal mammary artery due to increased angle



Heart Valve Surgery



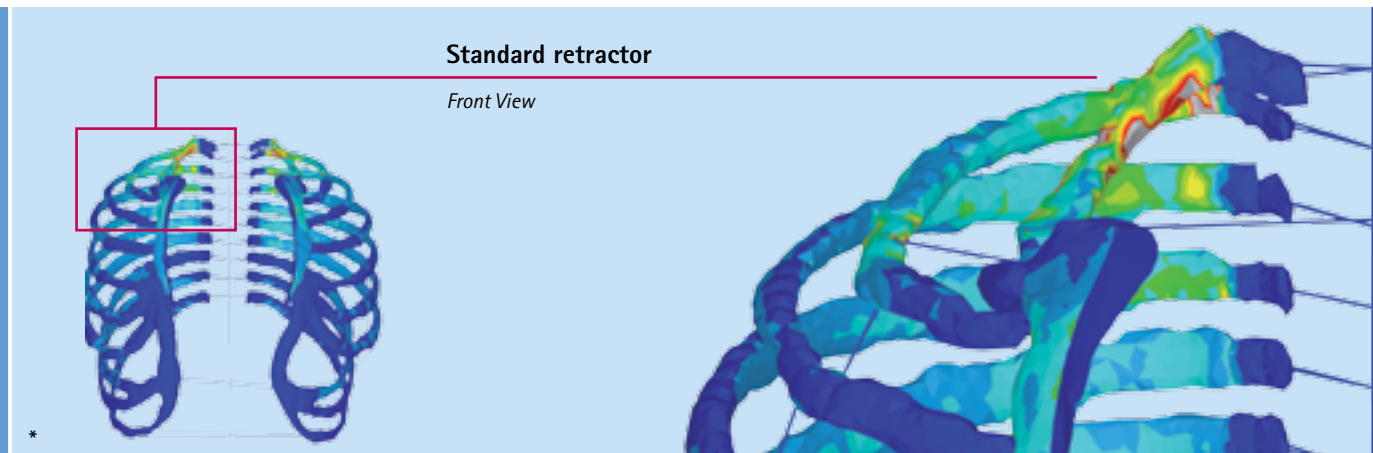
FC500R

AtRactor Retraction System Basic Set

- Compatible with the **Heart XS Accessories (Atrium & Valve Hooks)**
- **Accessories for heart valve operations can be fixed in any position** along the lateral arms

AtRactor

Computer Simulation of Stress on Ribs

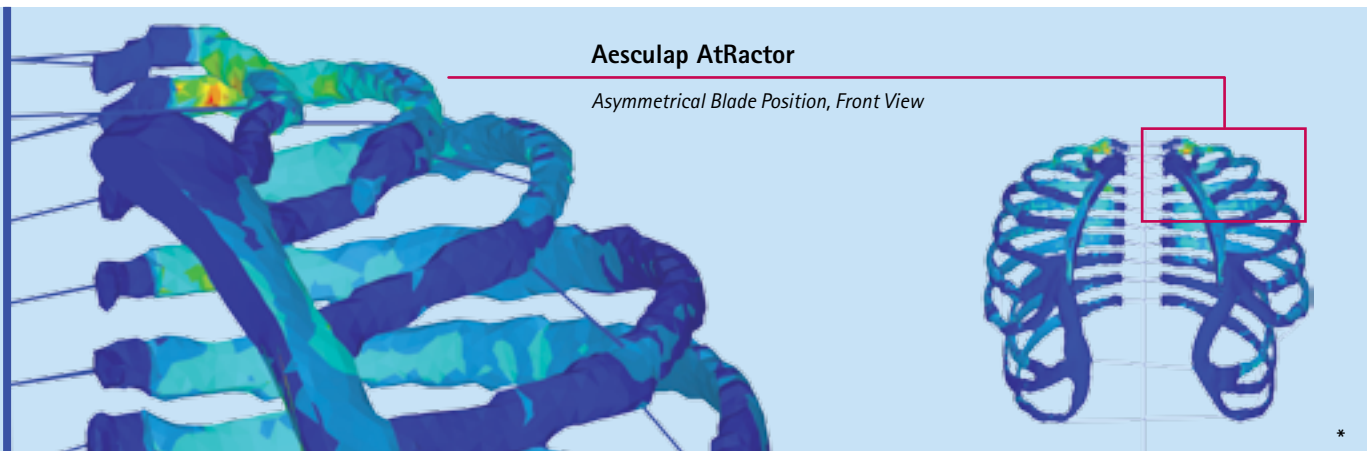


The computer simulation shows the V-shaped opening of the sternum created by the AtRactor causes less stress on the ribs and is therefore less traumatic for the patient than opening the sternum with standard retractors, which opens the sternum in a parallel manner.



The red color indicates the areas in which a pressure of 24 PSI is reached. The grey areas are those in which there is excessive pressure beyond 24 PSI. These are the areas in which a fracture is highly likely to occur. When a standard retractor is used, this pressure predominantly affects the first two ribs. With the **AtRactor**, used in combination with the flexible blades, no grey area can be seen in the computer simulation.

* Internal data produced by Prof. Dr. Ing. habil. Carsten Könke



Associate Professor Dr. med. Omer Dzemali

Senior Consultant Cardiac Surgery
 Stadtspital Triemli, Zurich

The compatible AtRactor retraction system offers an innovative solution for all open heart surgeries from sternotomy to mammary exposure – for every surgeon. Due to the postoperative risks which can occur especially after sternotomy in the upper rib area, the V-shaped exposition, which is less traumatic for the ribs, should be highlighted.

In addition, flexible retractor blades enable a considerable improvement to the view of the operating field. A specific feature is the gentle Mammary-Lift, which is – due to the transfer of the pressure from the sternum bone to the OR table – less traumatic for the patient in comparison to conventional Mammary Retractors.

AtRactor

Basic Set and Accessories

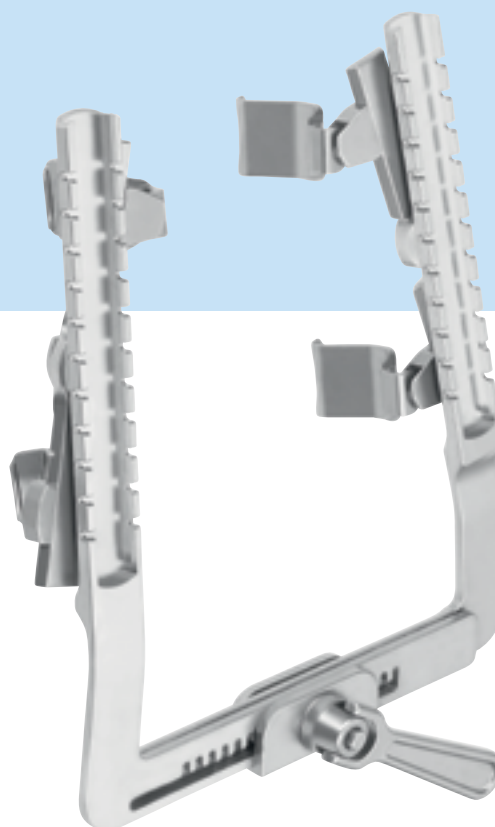
Basic Set Complete

FC500R

AtRactor Retraction System Basic Set

Set consisting of:

- 1 x **FC501R** AtRactor Retractor Frame
- 4 x **FC502R** AtRactor Swiveling Blades, Straight, 30 x 28 mm
- 4 x **FC503R** AtRactor Swiveling Blades, Straight, 40 x 28 mm
- 4 x **FC504R** AtRactor Swiveling Blades, Curved, 30 x 28 mm
- 4 x **FC505R** AtRactor Swiveling Blades, Curved, 40 x 28 mm



Interchangeable Blades (Depth and Width), (sold individually)



FC502R

30 x 28 mm

AtRactor Swiveling Blade, Straight



FC503R

40 x 28 mm

AtRactor Swiveling Blade, Straight



FC506R

50 x 28 mm

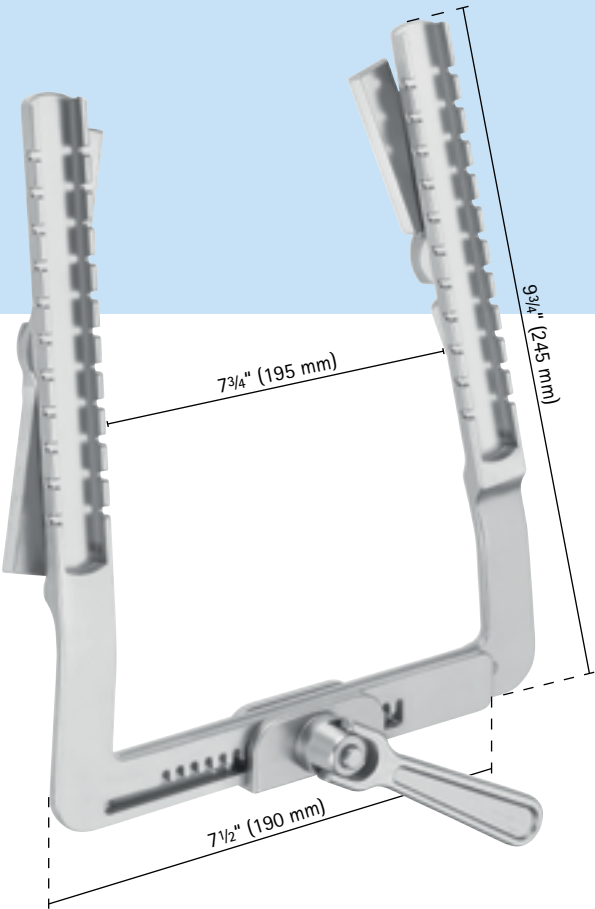
AtRactor Swiveling Blade, Straight

AtRactor (Frame)

FC501R

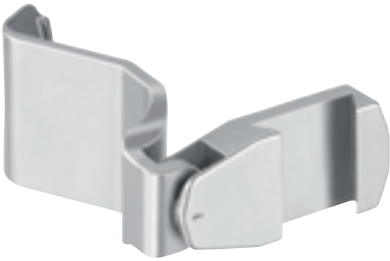
AtRactor Retractor Frame Only

Ratchet Bar	Arm Length	Max. Opening
7 1/2" (190 mm)	9 3/4" (245 mm)	7 3/4" (195 mm)



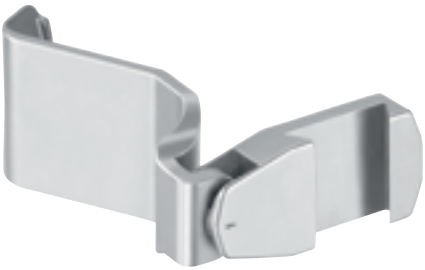
FC504R

30 x 28 mm
AtRactor Swiveling Blade, Curved



FC505R

40 x 28 mm
AtRactor Swiveling Blade, Curved



FC507R

50 x 28 mm
AtRactor Swiveling Blade, Curved

AtRactor

IMA Set

IMA Set Complete

FC510R

AtRactor IMA Set Complete

Set consisting of:

- 1 x **FC500R** AtRactor Retraction System Basis Set
- 1 x **FC511R** AtRactor Mammary Retraction System
- 2 x **FC512R** AtRactor Connection Clamp for FC511R



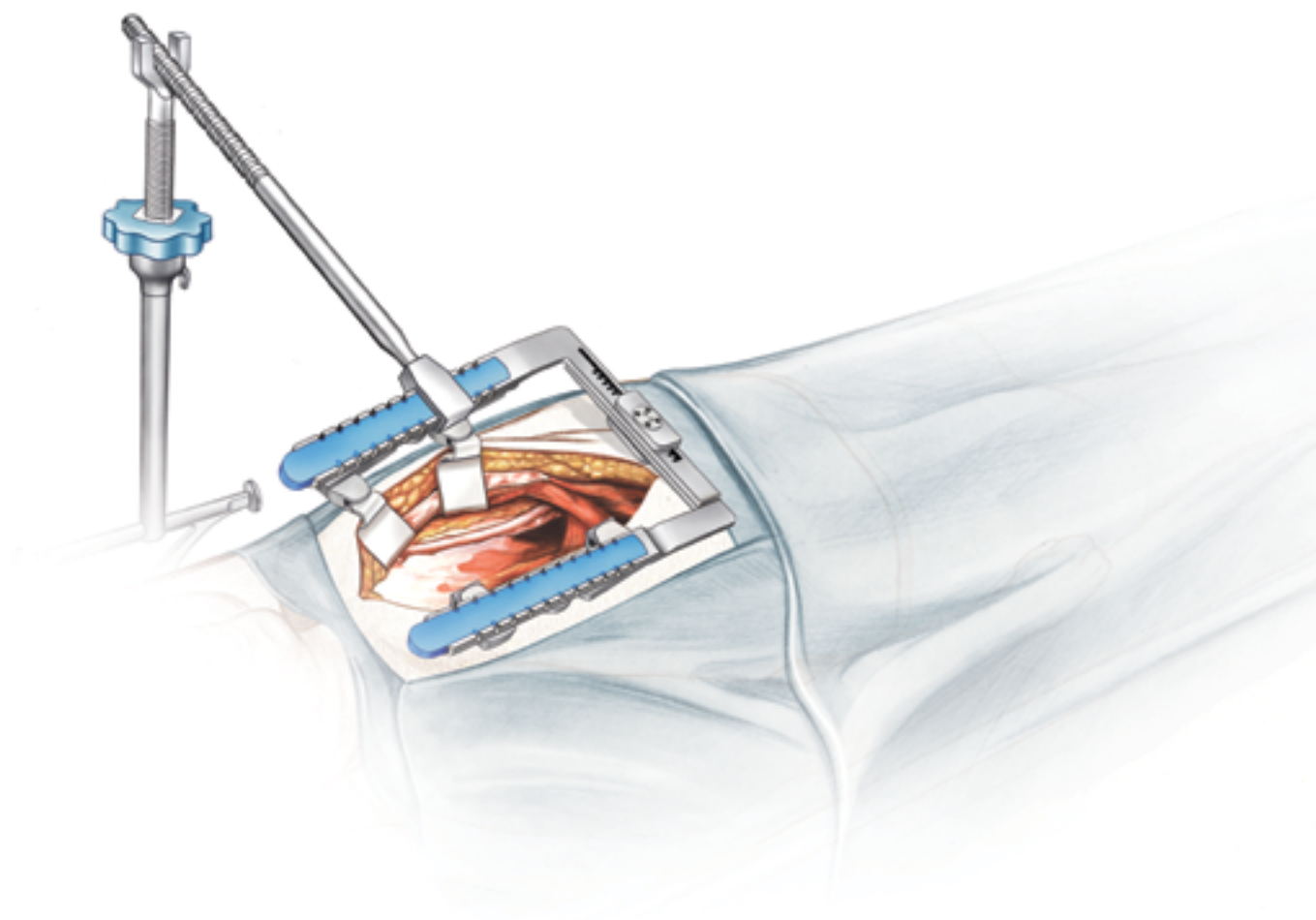
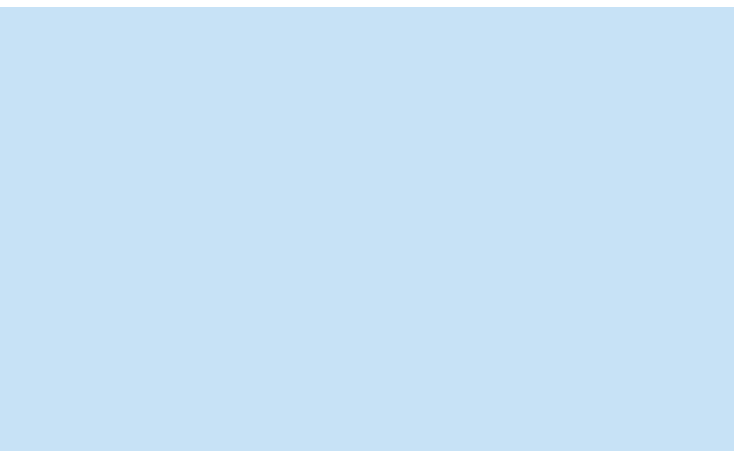
FC511R

AtRactor Mammary Retraction System



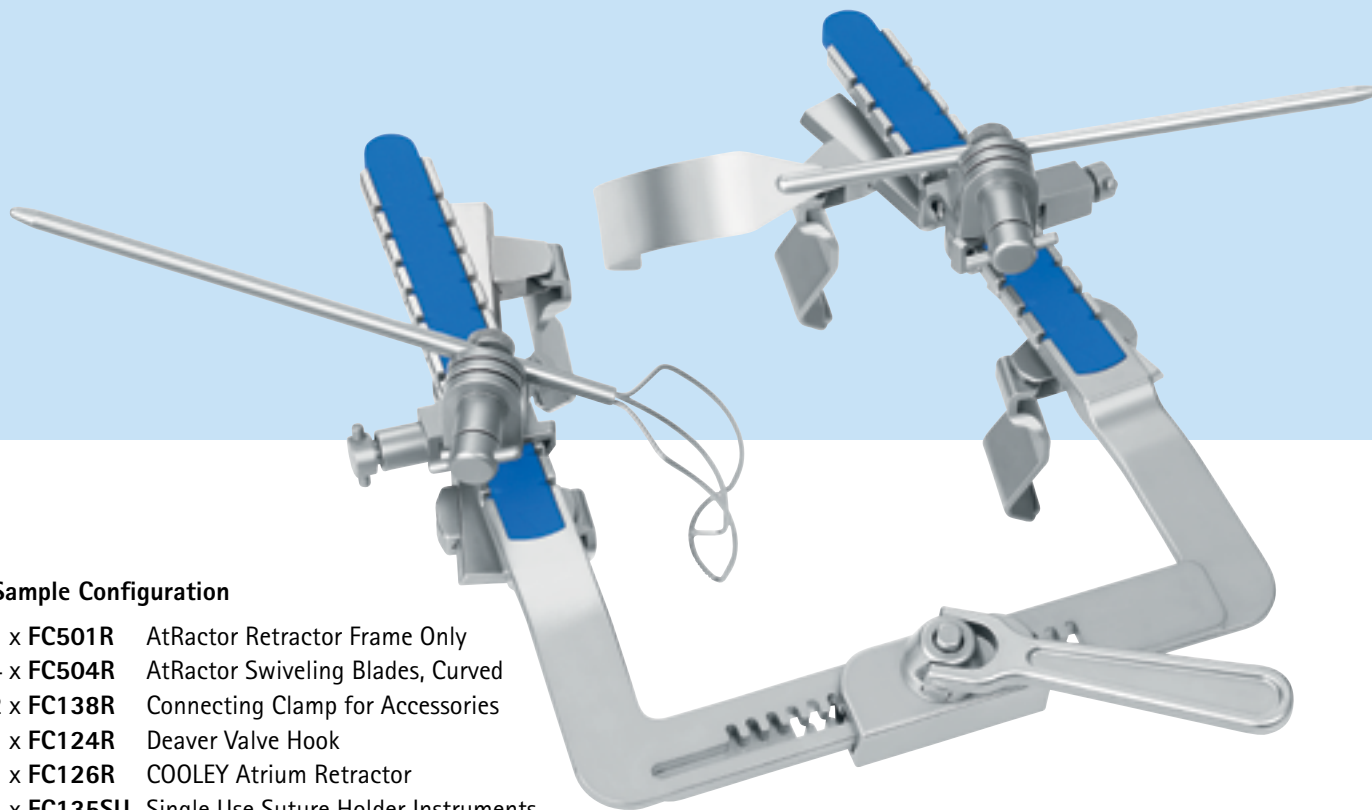
FC512R

AtRactor Connection Clamp for FC511R



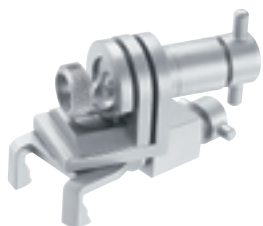
AtRactor

Sample Configuration



Sample Configuration

- 1 x **FC501R** AtRactor Retractor Frame Only
- 4 x **FC504R** AtRactor Swiveling Blades, Curved
- 2 x **FC138R** Connecting Clamp for Accessories
- 1 x **FC124R** Deaver Valve Hook
- 1 x **FC126R** COOLEY Atrium Retractor
- 1 x **FC135SU** Single Use Suture Holder Instruments



FC138R

Heart XS Connecting Clamp for Optional Accessories

MG290R



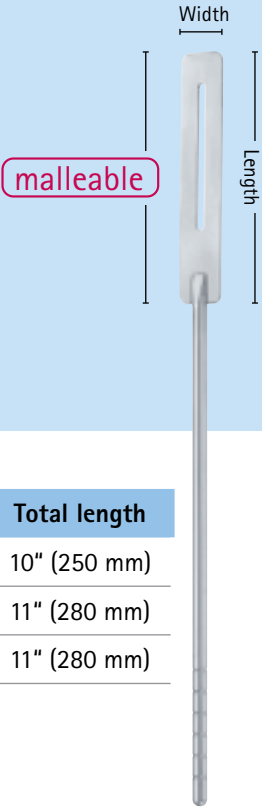
Heart XS Hook Extension Bar

FC147R



Valve XS Connecting Clamp

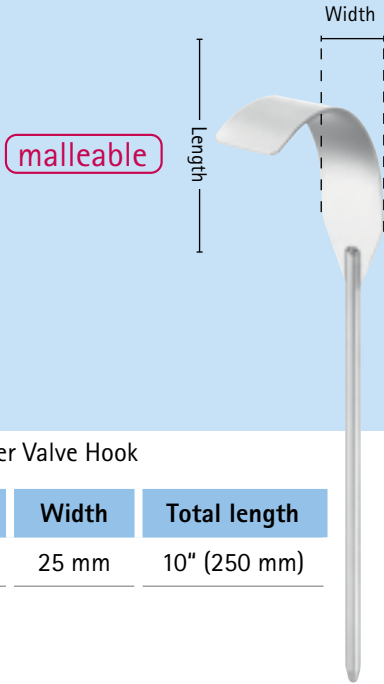
Optional Accessories



FC121R – FC123R

Heart XS Malleable Valve Hook

Item No.	Length	Width	Total length
FC121R	65 mm	18 mm	10" (250 mm)
FC122R	95 mm	18 mm	11" (280 mm)
FC123R	95 mm	22 mm	11" (280 mm)



FC124R

Heart XS Malleable Deaver Valve Hook

Item No.	Length	Width	Total length
FC124R	75 mm	25 mm	10" (250 mm)

Single Use Suture Holder Inserts



FC125R – FC127R

Heart XS COOLEY Atrium Retractor, Shaft: Rigid

Item No.	Length	Width	Total length
FC125R	60 mm	20 mm	10" (250 mm)
FC126R	60 mm	35 mm	10" (250 mm)
FC127R	60 mm	45 mm	10" (250 mm)



FC135SU

Single Use Suture Holder Inserts

1 box FC135SU: 10 Packs of 2, Sterile Units

All rights reserved. Technical alterations are possible. This leaflet may be used for no other purposes than offering, buying and selling of our products. No part may be copied or reproduced in any form. In the case of misuse we retain the rights to recall our catalogs and price lists and to take legal actions.

©2015 AESCULAP. ALL RIGHTS RESERVED. PRINTED IN THE USA.
Aesculap is an equal opportunity employer

Aesculap, Inc. | 3773 Corporate Parkway | Center Valley, PA | 18034
Phone 800-282-9000 | Fax 610-791-6886 | www.aesculapusa.com

Aesculap, Inc. – a B. Braun company

DOC1269 10/15